

PLANS
FOR THE
Improvement of the Highway known as the
RIVER ROAD
LEADING FROM
DEERFIELD CORNERS NORTHEASTERLY
FOR A DISTANCE OF 2 1/2 MILES IN THE
Town of Deerfield, Oneida Co. N.Y.

Chapter 115, Laws of 1898.

SCALES

PLAN	100 FT = 1 INCH
PROFILE	100 FT = 1 INCH
SECTION	20 FT = 1 INCH

Original Petition No 5
Final " " 3

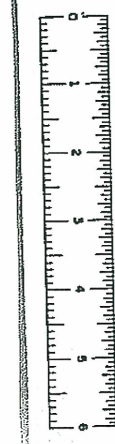
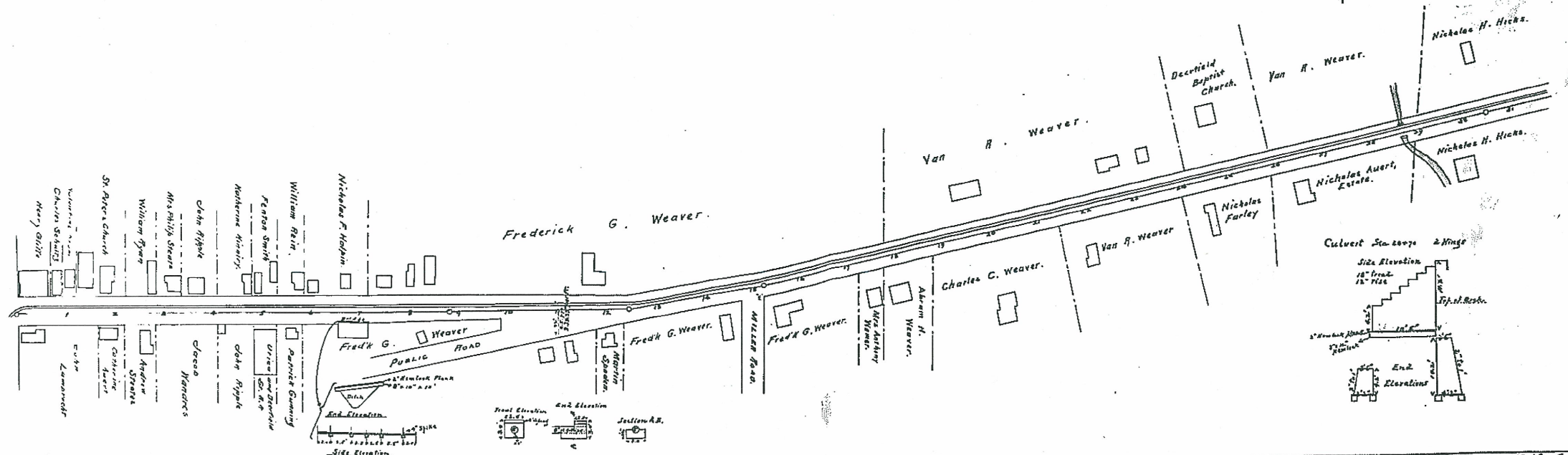
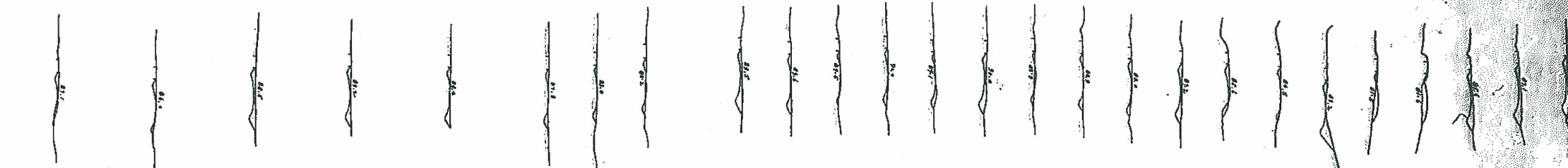
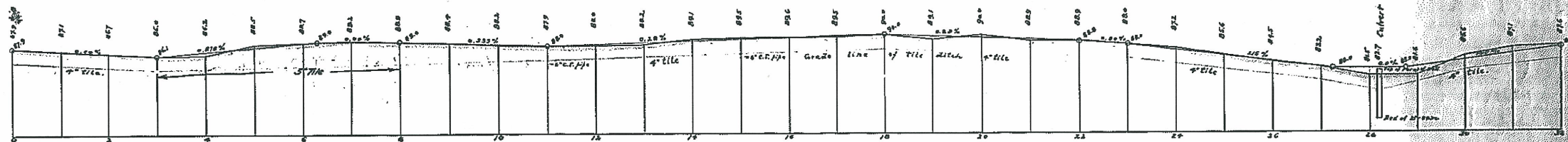
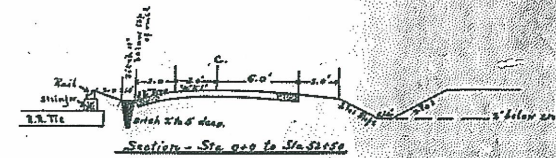
From Office of Division Engineer,
Syracuse, N.Y.

ROAD No. 3

Approved *September 10th* 1898
W. C. Johnson State Engineer & Surveyor
Approved and adapted pursuant to Sec. 6 of Chap. 115, Laws of 1898.
By Resolution of the Board of Supervisors *Sept. 16th 1898*
Oliver J. Day, Clerk.

EXHIBITED AT LETTING

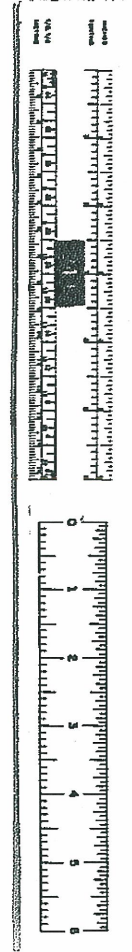
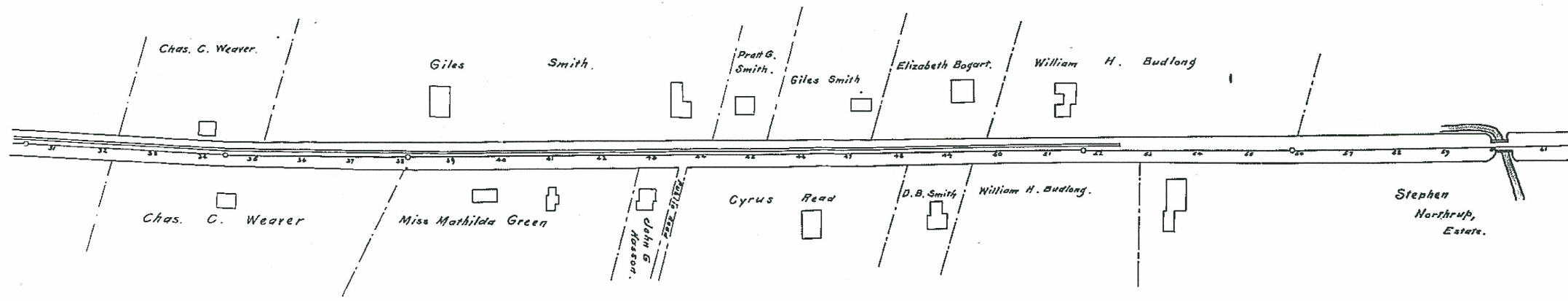
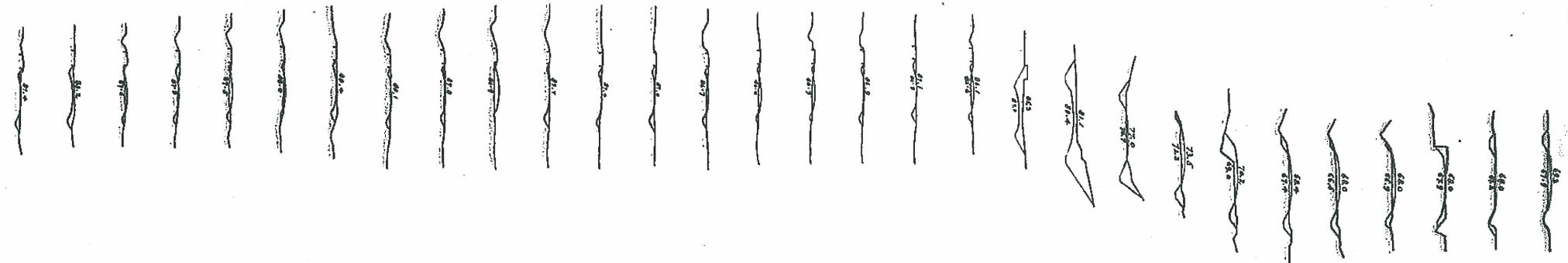
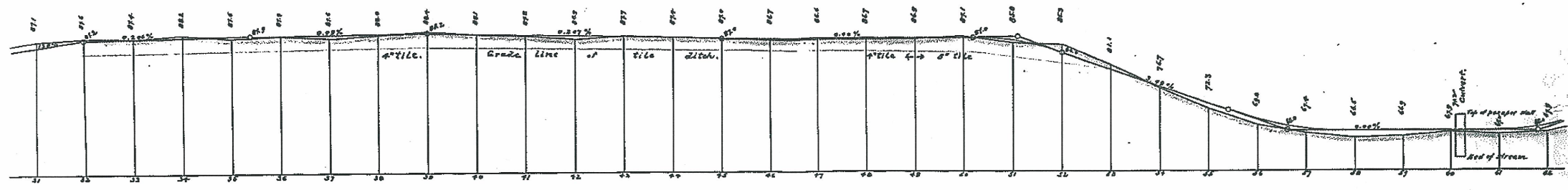
OCT 4 1898
W. C. Johnson
State Engineer





Approved *John A. ...* 1898
 State Engineer & Surveyor.
 Approved and Adopted pursuant to Sec. 15 laws of 1898.
 By Resolution of the Board of Supervisors *...*
John A. ...

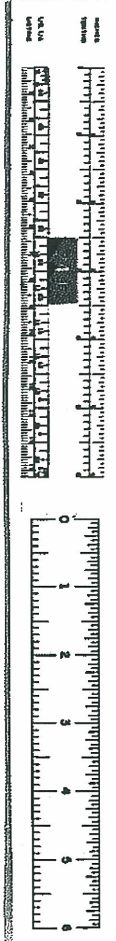
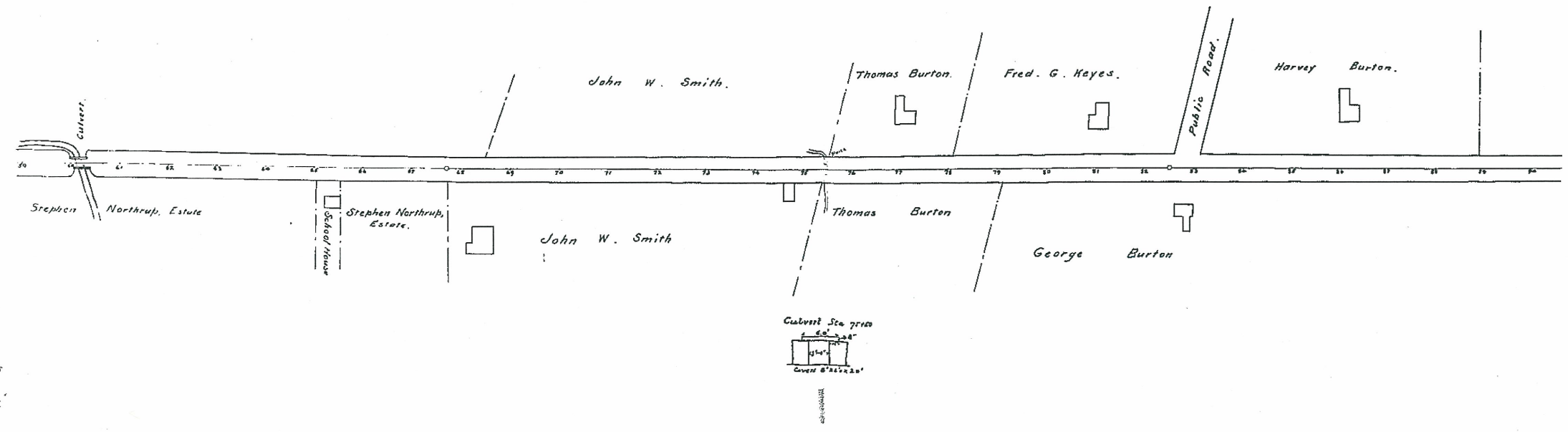
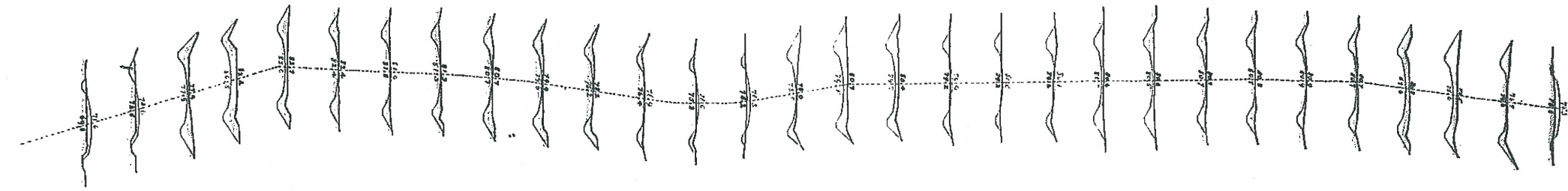
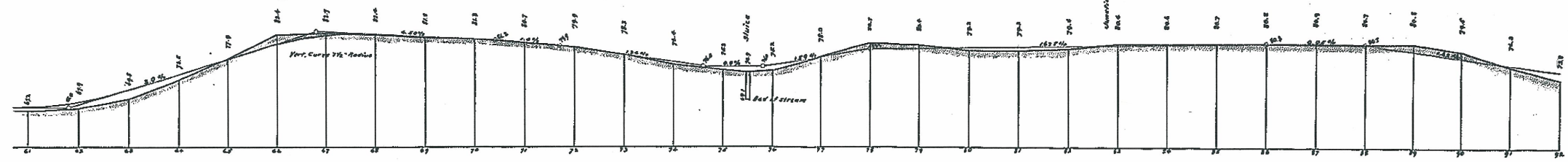
EXHIBITED AT LETTING
 OCT 4 1898
H. ...
 Deputy State Eng.



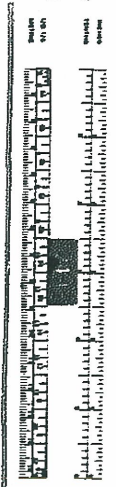
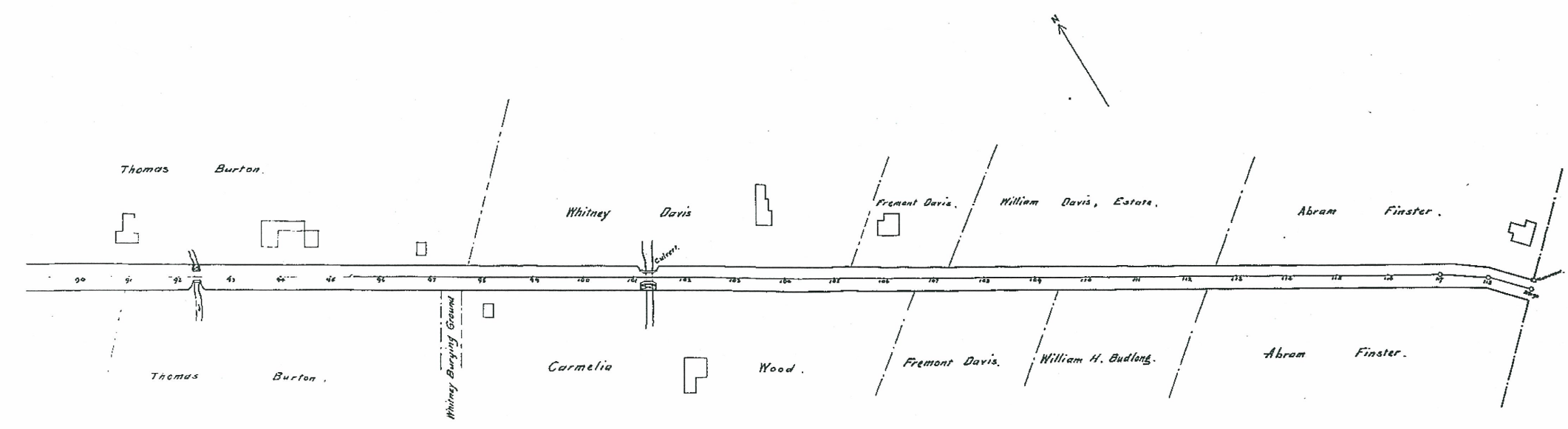
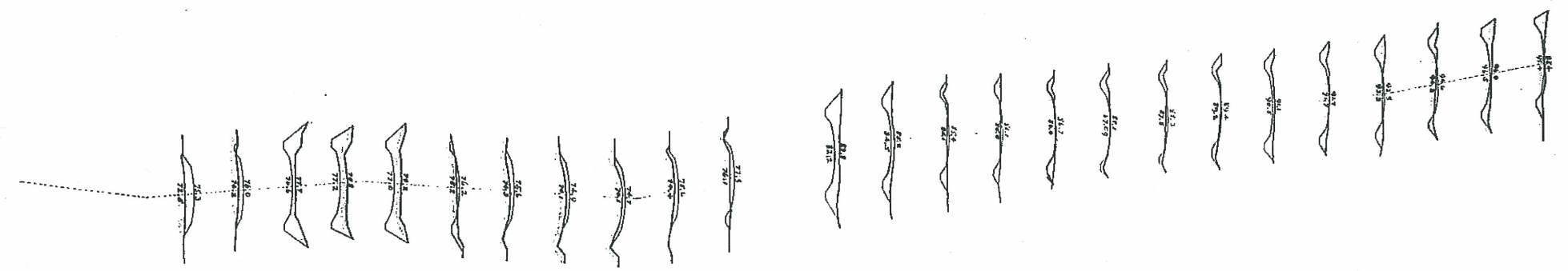
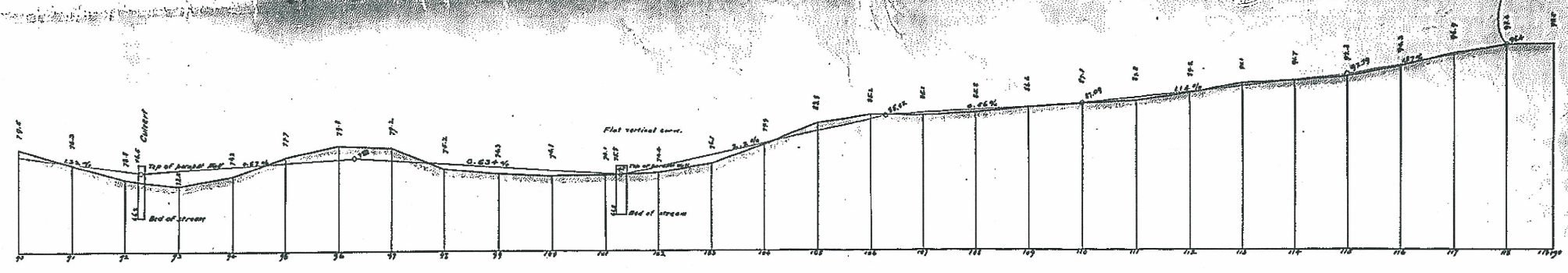


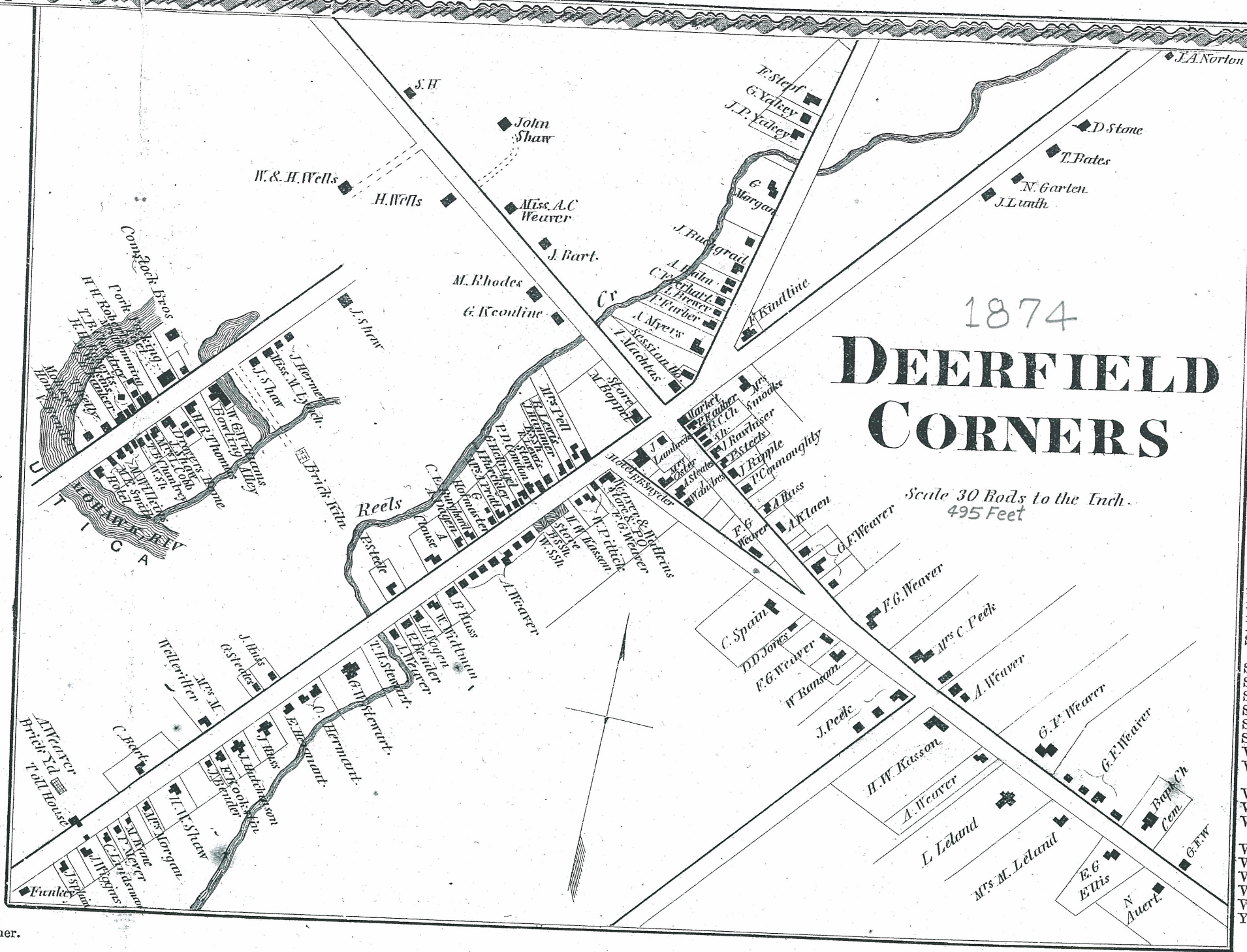
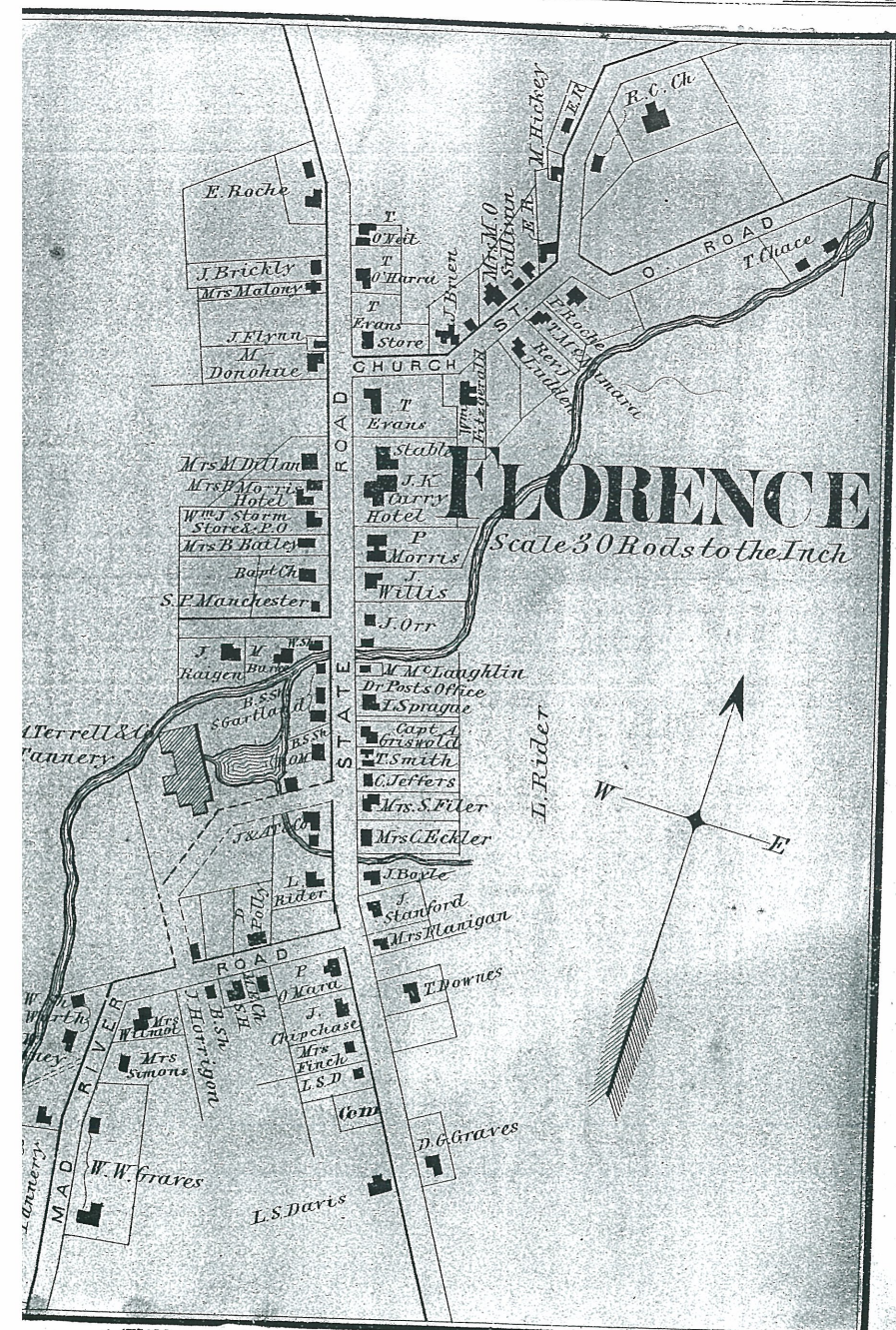
Approved *W. Adams* 1898
State Engineer & Surveyor
Approved and Adopted pursuant to Sec. 6 of Chap. 16, Laws of 1897
By Resolution of the Board of Supervisors
Clayton D. Key Clerk

EXHIBITED AT LISTING
OCT 21 1898
H. C. ...
County Clerk



Approved *September 11, 1898* State Engineer & Surveyor
W. L. Adams
Approved and Adopted pursuant to Sec. 6 of Chap. 115, laws of 1898
By Resolution of the Board of Superintendents *July 16, 1898*
Clayton S. Day Clerk





Deerfield Business Notices

BUDLONG W. H.,	Manufacturer of C	field Corners.
BRIZIE W. R.,	Manufacturer of Bric	
BURTON THOS. M.,	Farmer.	P. O.
BROWN JOHN D.,	"	"
BOWEN THOMAS,	"	P. O.
BEATON C.,	"	"
BLUE A. L.,	"	North
BLUE ARCHIBALD,	"	"
CONDON P. D.,	Dry Goods and Gr	Corners.
COVENTRY R.,	Farmer.	Deerfield Co
CROSSMAN CURTIS,	Farmer.	"
CLAPP ERL S.,	"	"
CROSSMAN GEO. H.,	"	P. O. Deer
CONLON FRANK,	"	Deerfield
COX TRUMAN,	"	North Gag
CRUIKSHANK E. & G.,	Farmers.	Pol
COFFIN M. D.,	"	Nor
DAVIS F. S.,	"	Deer
DAVIS CHAS.,	"	"
DEWEY HENRY A.,	"	"
DOWNES V.,	Presbyterian Minister.	N
DOUGHERTY W. F.,	Farmer.	South
EDWARDS R. W.,	"	Deerfiel
ELLIS H. M.,	"	"
FREDRICKS G.,	"	"
GILBERT HORACE,	"	"
GREEN WM. M.,	"	North C
HARTER R.,	Justice and Farmer.	Dee
JONES R. R.,	"	"
JOHNSON JOHN,	"	Nort
KEYES GEO. B.,	"	Deer
KRIEGER FRED.,	"	Nort
MARSH LYMAN,	"	Deer
MAUTHE ELIAS,	"	"
MACADAM WM.,	Cheese Manufacturer.	
MCINTYRE A.,	Farmer.	
ROBERTS JOHN R.,	"	Deerfield Cor
SEYMOUR HORATIO,	Dairyman and Che	rer. Utica.
SHAW JOHN,	Farmer.	Deerfield Corne
SMITH GILES,	"	"
SHAW GEO.,	"	"
SMITH HENRY,	Grocer and Post Master	
SALISBURY T. S.,	Farmer.	Poland.
SCHONNERHORN W. D.,	Farmer.	Polan
WEAVER F. G.,	Brick Manufacturer. De	
WEAVER G. F.,	Farmer and Dairy	Corners.
WEAVER A. C.,	Resident.	Deerfield Co
WEAVER JACOB G.,	Farmer.	"
WATKINS THOS.,	Dealer in Dry Goods, G	Shoes, Crockery, &c.
WELLS WM.,	Farmer.	Deerfield C
WILLMARTH ISAAC,	Farmer.	"
WISER CHAS.,	"	North Gag
WALKER PETER,	"	"
WARDER ROBT.,	"	"
YARKEY JOHN,	"	Deerfield C

rence (Village) Business Notices.
 J. K., Proprietor Curry's Hotel. Good Livery attached. Fishing parties accommodated.
 BY D., Proprietor, Murphey's Hotel. Thompson Corners, E. Florence.
 FREE T., Dealer in Dry Goods, Choice Groceries, Prockery, Glass, Hats, Caps, Boots and Shoes, Hardware, Pure Wines and Liquors, Choice cigars.

LUDDEN JNO., Pastor of the R. C. Church.
 POST J. R., Physician and Surgeon.
 RIDER A. L., Foreman for Terrill & Co.
 GRAVES W. W., Tanner and Dealer in Leather.
 GRAVES D. G., Justice of the Peace.
 WORTH THEODORE, Farm for sale 96 A. Well timbered and watered. Under good cultivation; containing a fine Stone Quarry and good buildings.
 RILEY GEO., Manufacturer and Dealer in Lumber and Bark. P. O. Camden.
 DOOLY T., Farmer and Hop Grower.
 LEWIS E., Justice of Sessions. E. Florence.

DEERFIELD

Scale 1/4 Inches to the Mile

