
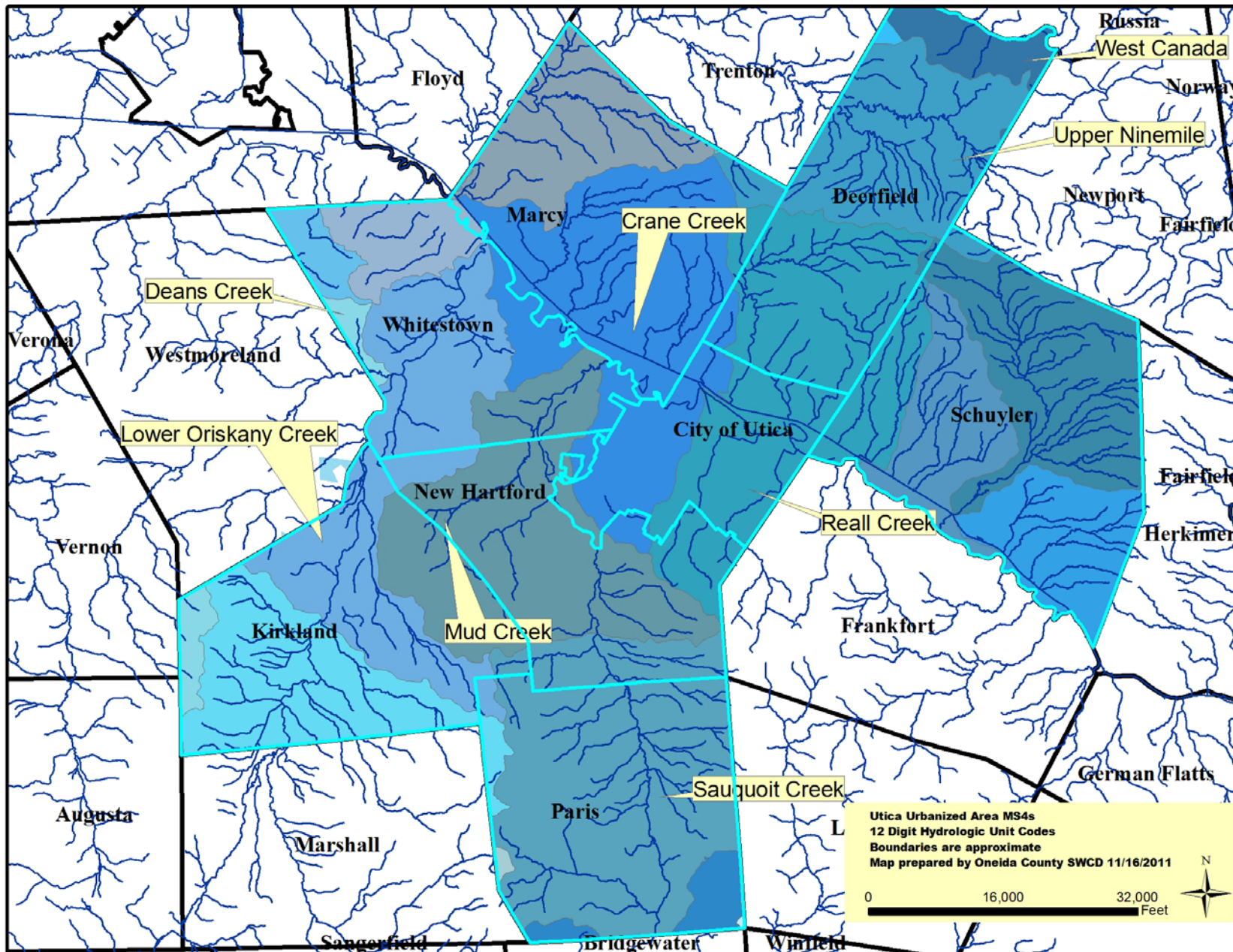


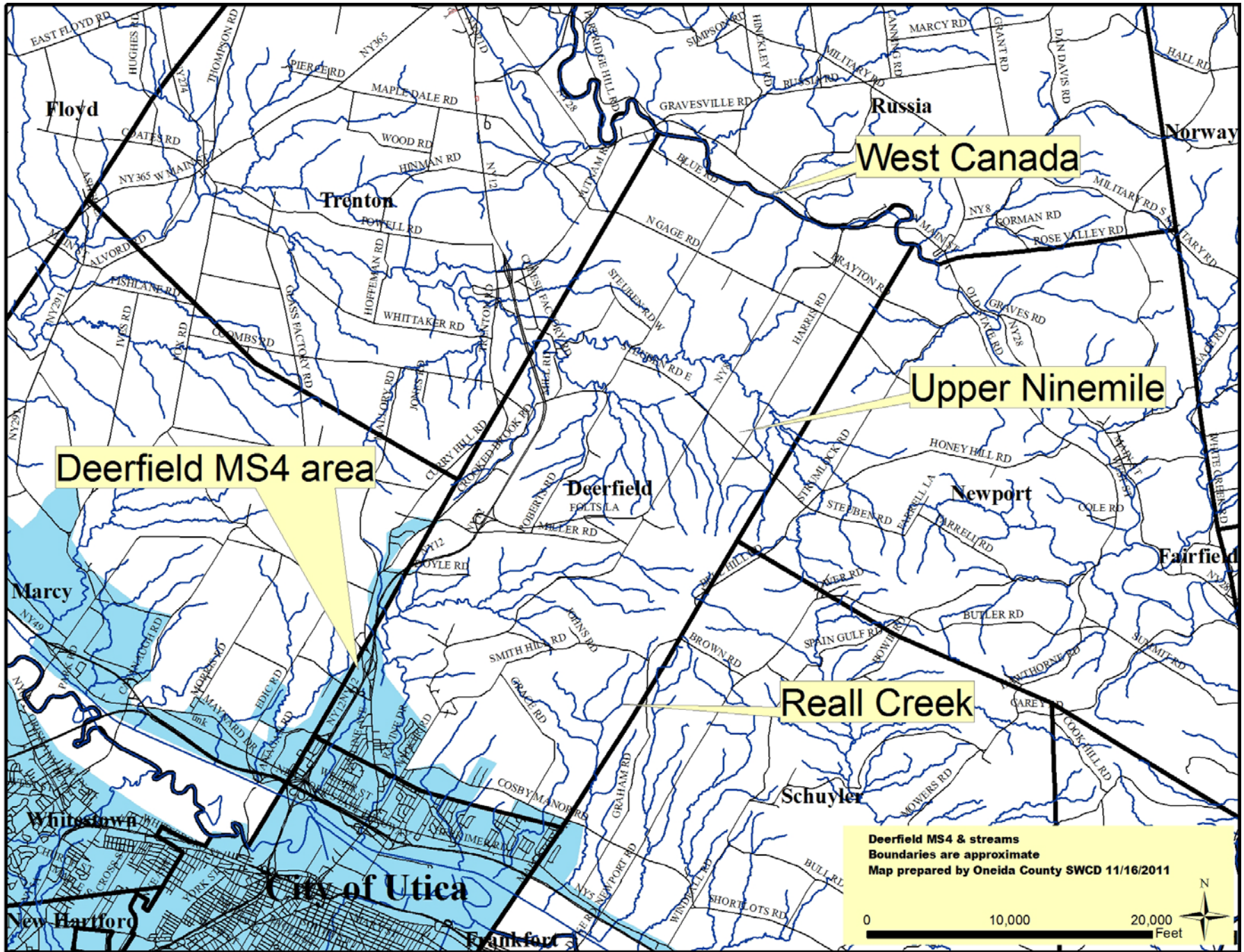
Utica Urbanized Area MS4s
 Boundaries are approximate
 Map prepared by Oneida County SWCD 11/16/2011

0 11,500 23,000 Feet

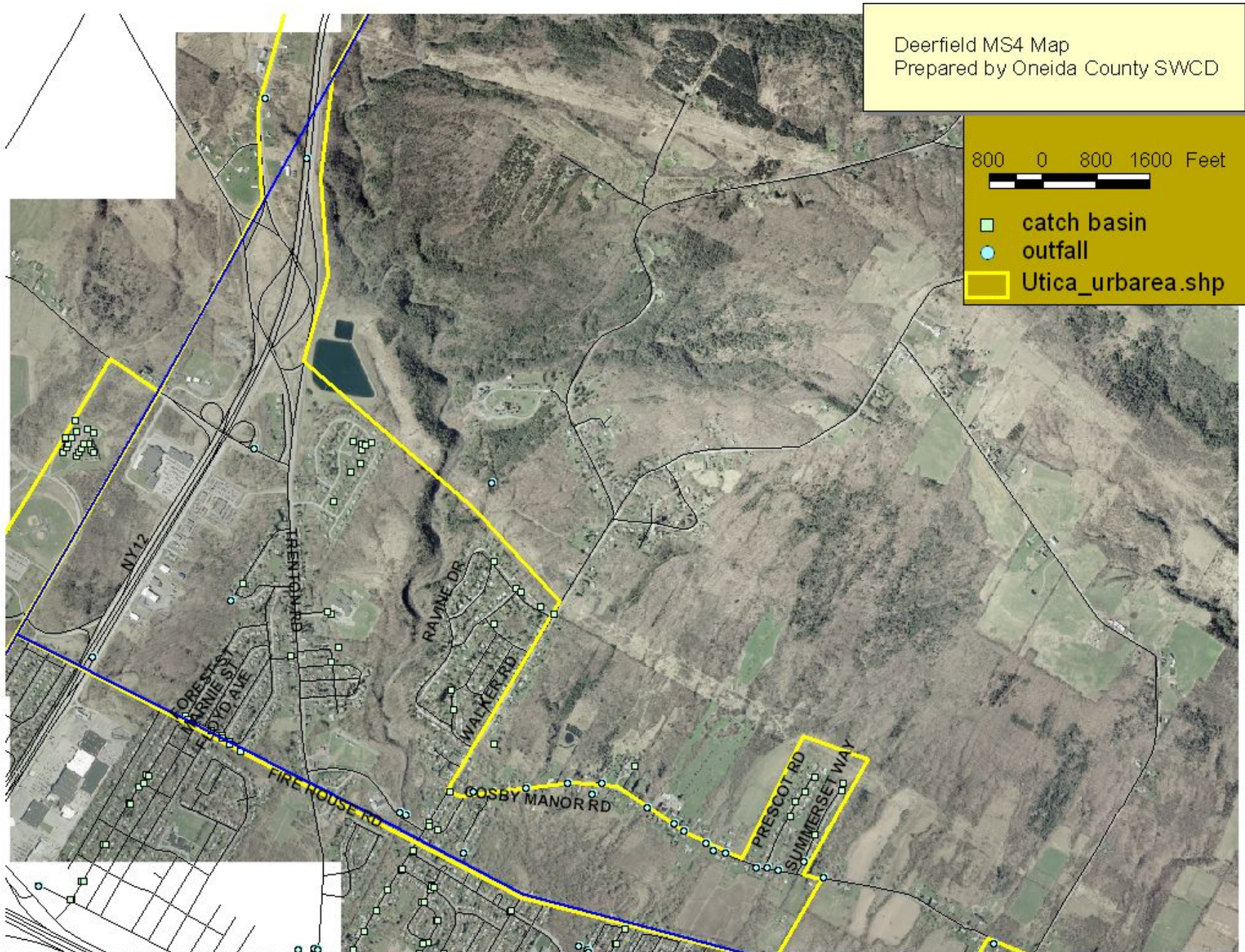




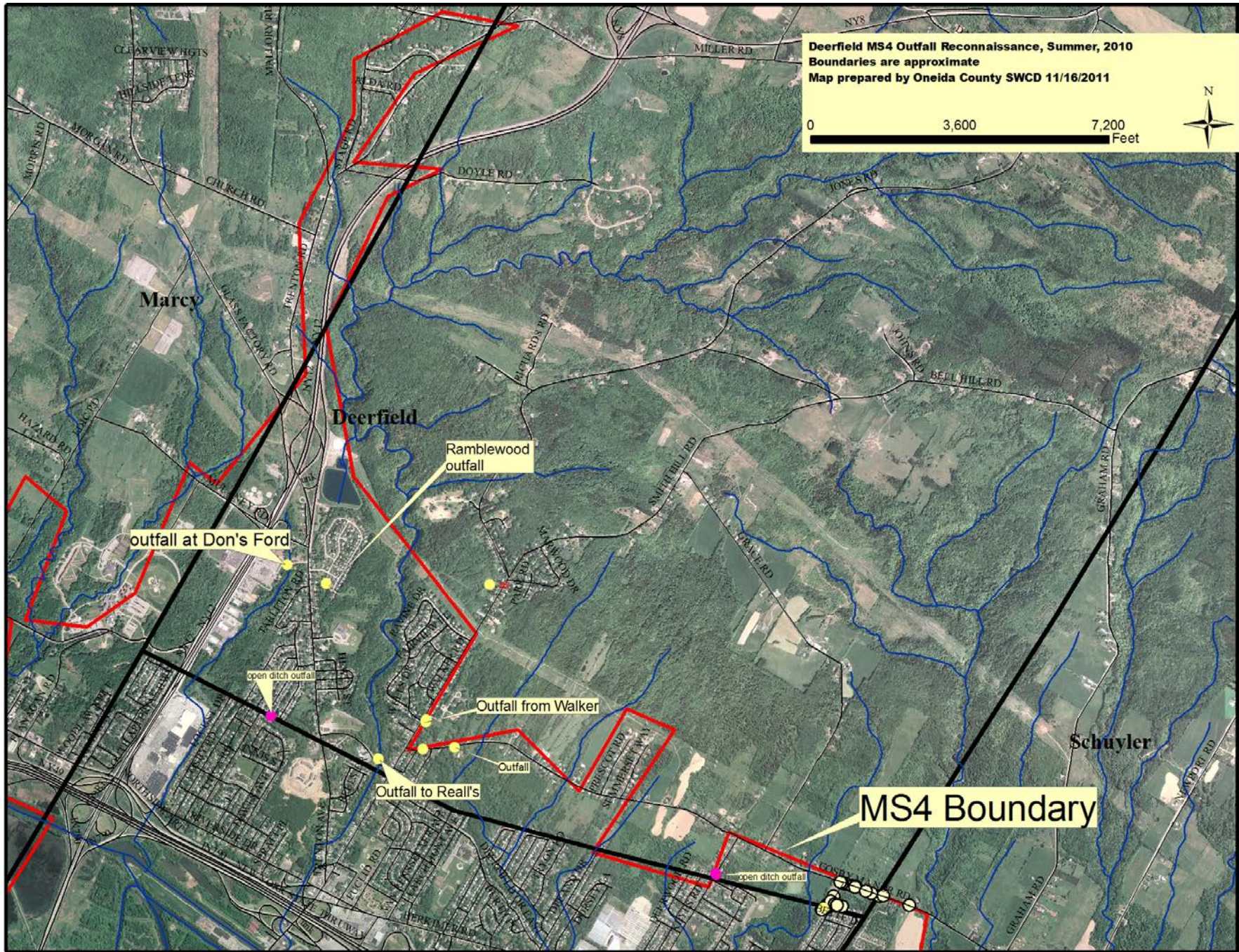
This map shows the watersheds in the Utica Urbanized Area using different shades of blue. The blue lines are the streams and tributaries that drain the watershed areas.



This map shows the MS4 area and the streams in the Town of Deerfield.



Deerfield's Stormwater System was originally mapped in 2006 for location of catch basins and culverts.



Deerfield's outfalls were mapped in 2010 to determine their condition.